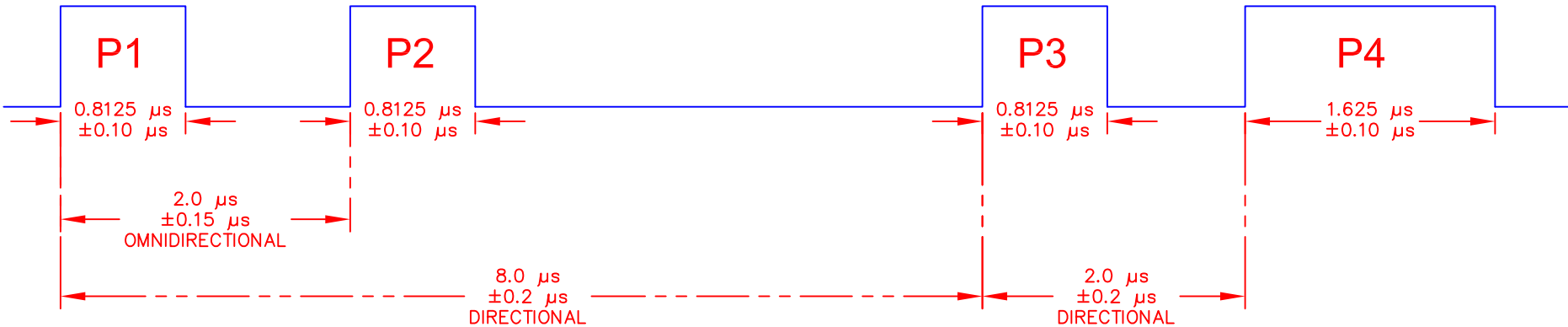
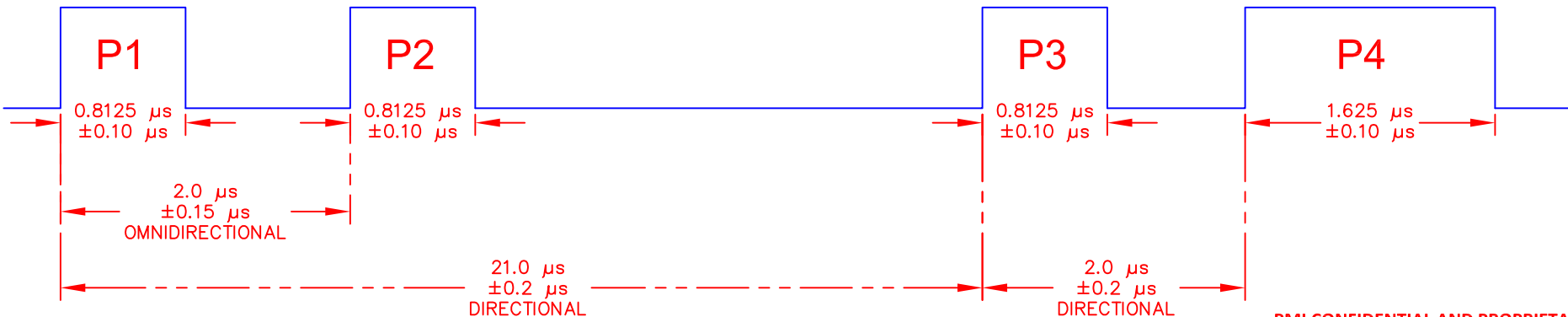


RF PULSE SPECIFICATION:

- ATCRBS/MODE S ALL CALL MODE 3/A (RISE/FALL TIMES: 0.05 μ s TO 0.1 μ s)



- ATCRBS/MODE S ALL CALL MODE C (RISE/FALL TIMES: 0.05 μ s TO 0.2 μ s)



PMI CONFIDENTIAL AND PROPRIETARY

PLANAR MONOLITHICS INDUSTRIES, INC.

7311-F GROVE ROAD
 FREDERICK, MARYLAND 21704 USA
 TEL: 301-662-5019 FAX: 301-662-1731
 WEBSITE: www.pmi-rf.com
 E-MAIL: sales@pmi-rf.com
 ISO 9001 CERTIFIED



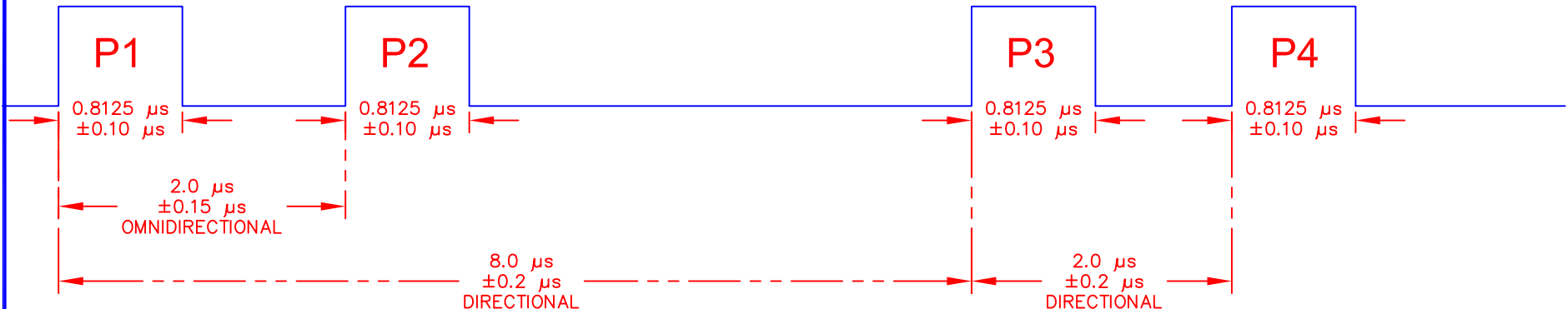
APPROVALS		DATE		TITLE			
DRAWN		2/13/15		PRODUCT FEATURE			
CHECKED				PMD-PWR-1030M-ATN-SFF			
ISSUED				POWER DETECTOR MODULE			
SIZE	FSCM NO.	DWG NO.		REV.			
A	05XQ0	27024101		A1			
SCALE N:S				SHEET		2 OF 7	

REVISIONS				
ZONE	REV.	DESCRIPTION	DATE	APPROVED
	A1	ORIGINAL RELEASE	2/13/15	

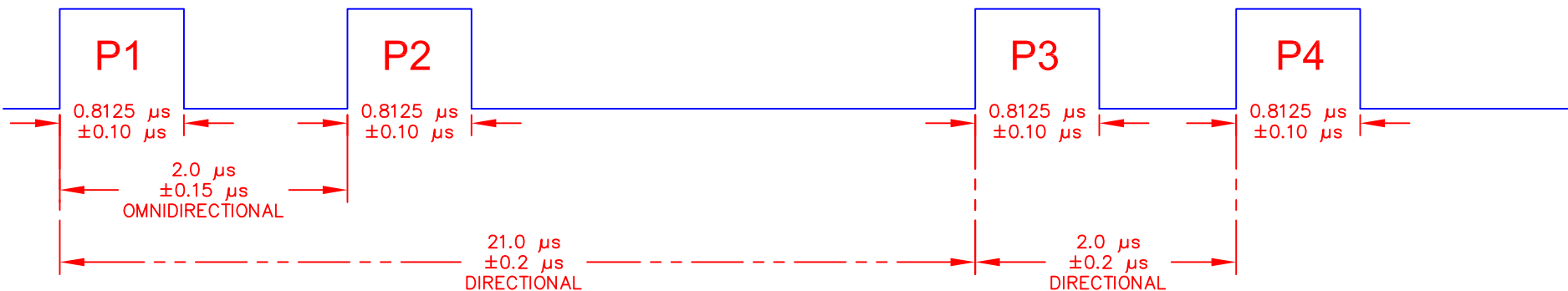
RF PULSE SPECIFICATION:

REVISIONS				
ZONE	REV.	DESCRIPTION	DATE	APPROVED
	A1	ORIGINAL RELEASE	2/13/15	

- ATCRBS ONLY ALL CALL MODE 3/A (RISE/FALL TIMES: 0.05 μ s TO 0.1 μ s)



- ATCRBS ONLY ALL CALL MODE C (RISE/FALL TIMES: 0.05 μ s TO 0.1 μ s)



PMI CONFIDENTIAL AND PROPRIETARY

- ALL PULSE MODES RELATIVE PULSE AMPLITUDE
- P3 AMPLITUDE: _____ ± 1 dB OF P1
- P4 AMPLITUDE: _____ ± 1 dB OF P3

PLANAR MONOLITHICS INDUSTRIES, INC.

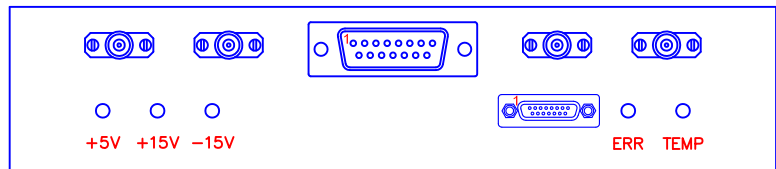
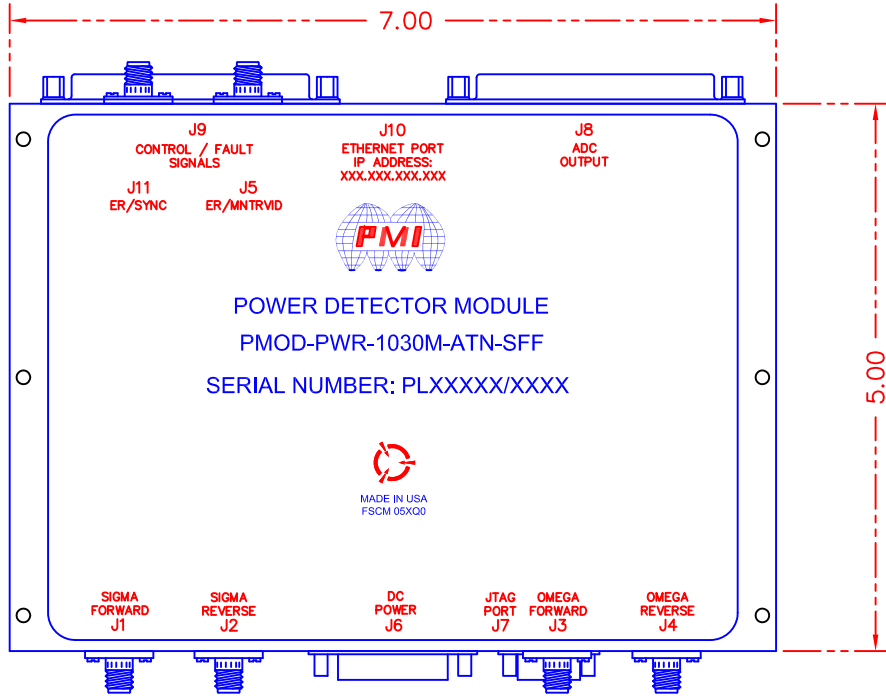
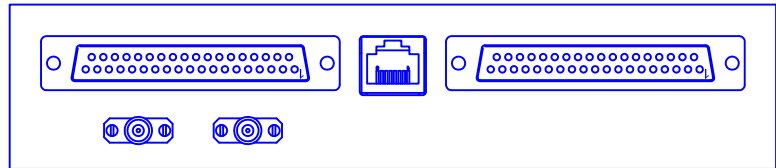
7311-F GROVE ROAD
 FREDERICK, MARYLAND 21704 USA
 TEL: 301-662-5019 FAX: 301-662-1731
 WEBSITE: www.pmi-rf.com
 E-MAIL: sales@pmi-rf.com
 ISO 9001 CERTIFIED



APPROVALS		DATE	TITLE		
DRAWN <i>DPD</i>		2/13/15	PRODUCT FEATURE		
CHECKED			PMOD-PWR-1030M-ATN-SFF		
ISSUED			POWER DETECTOR MODULE		
SIZE	FSCM NO.	DWG NO.	REV.		
A	05XQ0	27024101	A1		
SCALE N:S			SHEET 3 OF 7		

REVISIONS				
ZONE	REV.	DESCRIPTION	DATE	APPROVED
	A1	ORIGINAL RELEASE	2/13/15	

MECHANICAL OUTLINE:



- *+5V, +15V, -15V LIGHTS WHEN POWERED
- *ERR LIGHTS WITH A PARITY ERROR IN A/D CONVERSION
- *TEMP LIGHTS WHEN OVER / UNDER TEMP ERROR

ALL DIMENSIONS ARE IN INCHES
TOLERANCES:
X.XX ±0.020
X.XXX ±0.010

PMI CONFIDENTIAL AND PROPRIETARY

PLANAR MONOLITHICS INDUSTRIES, INC.

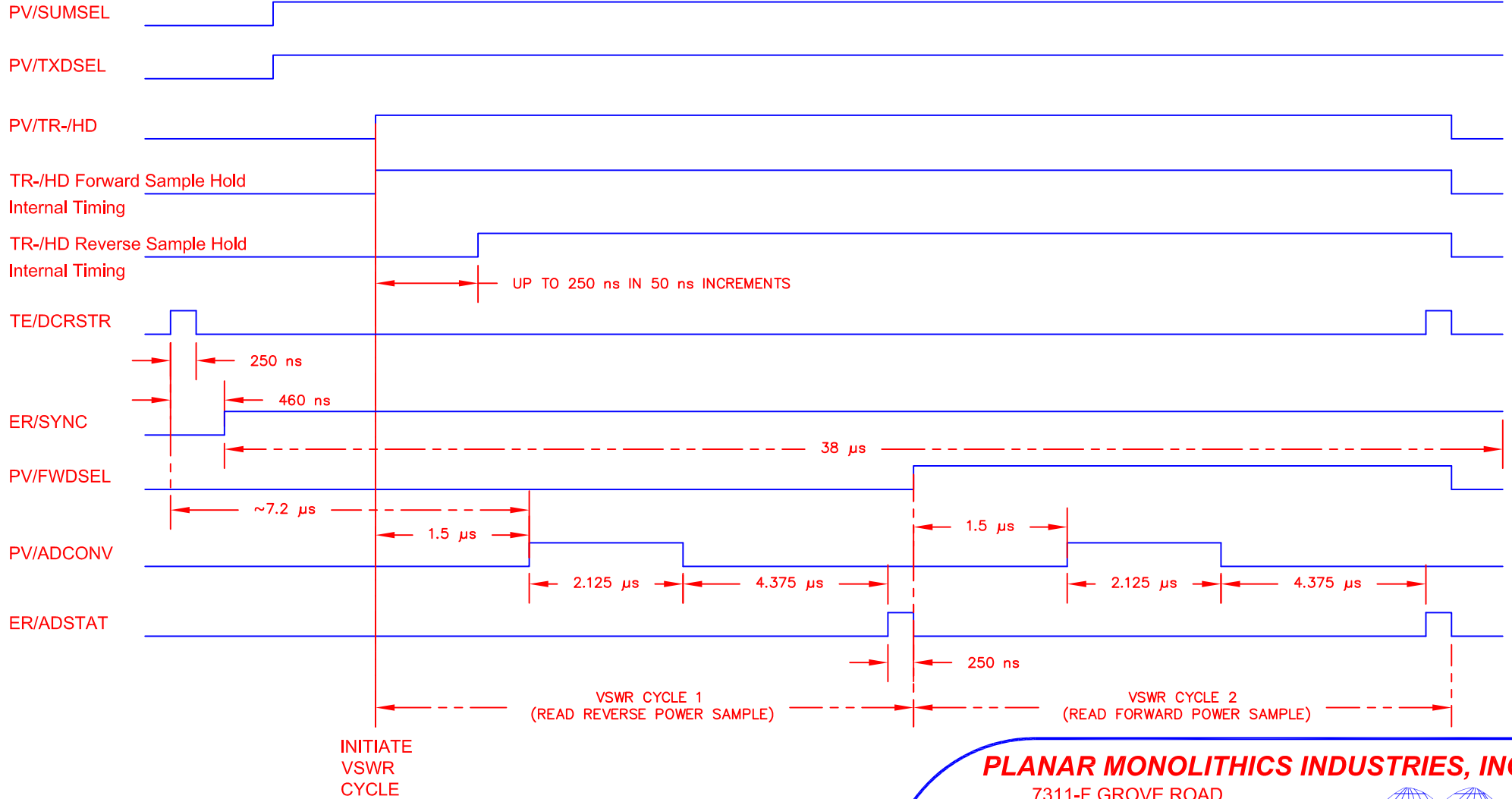
7311-F GROVE ROAD
FREDERICK, MARYLAND 21704 USA
TEL: 301-662-5019 FAX: 301-662-1731
WEBSITE: www.pmi-rf.com
E-MAIL: sales@pmi-rf.com
ISO 9001 CERTIFIED



APPROVALS		DATE	TITLE		
DRAWN	<i>DPD</i>	2/13/15	PRODUCT FEATURE		
CHECKED			PMOD-PWR-1030M-ATN-SFF		
ISSUED			POWER DETECTOR MODULE		
SIZE	FSCM NO.	DWG NO.	REV.		
A	05XQ0	27024101	A1		
SCALE	N:S	SHEET	4 OF 7		

TIMING DIAGRAM:

REVISIONS				
ZONE	REV.	DESCRIPTION	DATE	APPROVED
	A1	ORIGINAL RELEASE	2/13/15	



PLANAR MONOLITHICS INDUSTRIES, INC.

7311-F GROVE ROAD
 FREDERICK, MARYLAND 21704 USA
 TEL: 301-662-5019 FAX: 301-662-1731
 WEBSITE: www.pmi-rf.com
 E-MAIL: sales@pmi-rf.com
 ISO 9001 CERTIFIED



PMI CONFIDENTIAL AND PROPRIETARY

APPROVALS		DATE	TITLE		
DRAWN <i>DPD</i>		2/13/15	PRODUCT FEATURE		
CHECKED			PMD-1030M-ATN-SFF		
ISSUED			POWER DETECTOR MODULE		
SIZE	FSCM NO.	DWG NO.	REV.		
A	05XQ0	27024101	A1		
SCALE N:S			SHEET 5 OF 7		

CONTROLS:

REVISIONS				
ZONE	REV.	DESCRIPTION	DATE	APPROVED
	A1	ORIGINAL RELEASE	2/13/15	

J6 15-Pin Connector	Function
1	+15 VDC
2	+15 VDC
3	GND
4	GND
5	-15 VDC
6	-15 VDC
7	GND
8	GND
9	GND
10	GND
11	+5 VDC
12	+5 VDC
13	GND
14	NC
15	NC

J8 37-Pin Connector	Function
1	NC
2	ER/ADD00+
3	ER/ADD01+
4	ER/ADD02+
5	ER/ADD03+
6	ER/ADD04+
7	ER/ADD05+
8	ER/ADD06+
9	ER/ADD07+
10	ER/ADD08+
11	ER/ADD09+
12	ER/ADD10+
13	ER/ADD11+
14	NC
15	NC
16	NC
17	NC
18	NC
19	NC
20	ER/ADD00-
21	ER/ADD01-
22	ER/ADD02-
23	ER/ADD03-
24	ER/ADD04-
25	ER/ADD05-
26	ER/ADD06-
27	ER/ADD07-
28	ER/ADD08-
29	ER/ADD09-
30	ER/ADD10-
31	ER/ADD11-
32	NC
33	NC
34	NC
35	NC
36	NC
37	NC

J9 37-Pin Connector	Function	Description
1	NC	
2	ER/ADSTAT+	PULSE (1) INDICATES VALID CONVERSION
3	PV/SUMSEL+	SELECT OMEGA (0) / SIGMA (1) CHANNEL
4	PV/TXDSEL+	SELECT ANALOG VIDEO (0) / INPUT POWER (1)
5	PV/FWDSEL+	SELECT FORWARD (0) / REVERSE (1) POWER
6	TE/DCRSTR+	RESET SAMPLE AND HOLD ON AD (0)
7	PV/ADCONV+	TRIGGERS A/D CONVERSION PROCESS (1)
8	PV/TR-/HD+	SELECT ANALOG TRACKING (0) / HOLD FOR ADC (1)
9	ER/PARERR+	INDICATES PARITY ERROR (0)
10	ER/PDVID	VIDEO OUTPUT
11	NC	
12	NC	
13	NC	
14	NC	
15	NC	
16	NC	
17	NC	
18	NC	
19	NC	
20	ER/ADSTAT-	PULSE (1) INDICATES VALID CONVERSION
21	PV/SUMSEL-	SELECT OMEGA (0) / SIGMA (1) CHANNEL
22	PV/TXDSEL-	SELECT ANALOG VIDEO (0) / INPUT POWER (1)
23	PV/FWDSEL-	SELECT FORWARD (0) / REVERSE (1) POWER
24	TE/DCRSTR-	RESET SAMPLE AND HOLD ON AD (0)
25	PV/ADCONV-	TRIGGERS A/D CONVERSION PROCESS (1)
26	PV/TR-/HD-	SELECT ANALOG TRACKING (0) / HOLD FOR ADC (1)
27	ER/PARERR-	INDICATES PARITY ERROR (0)
28	NC	
29	NC	
30	NC	
31	NC	
32	NC	
33	NC	
34	NC	
35	NC	
36	NC	
37	NC	

J7 JTAG Connector	Function
1	TCK
2	GND
3	TDO
4	NC
5	TMS
6	VCC (+3.3V)
7	VPUMP
8	TRST
9	TDI
10	GND
11	NC
12	NC
13	NC
14	NC
15	NC

PMI CONFIDENTIAL AND PROPRIETARY

PLANAR MONOLITHICS INDUSTRIES, INC.

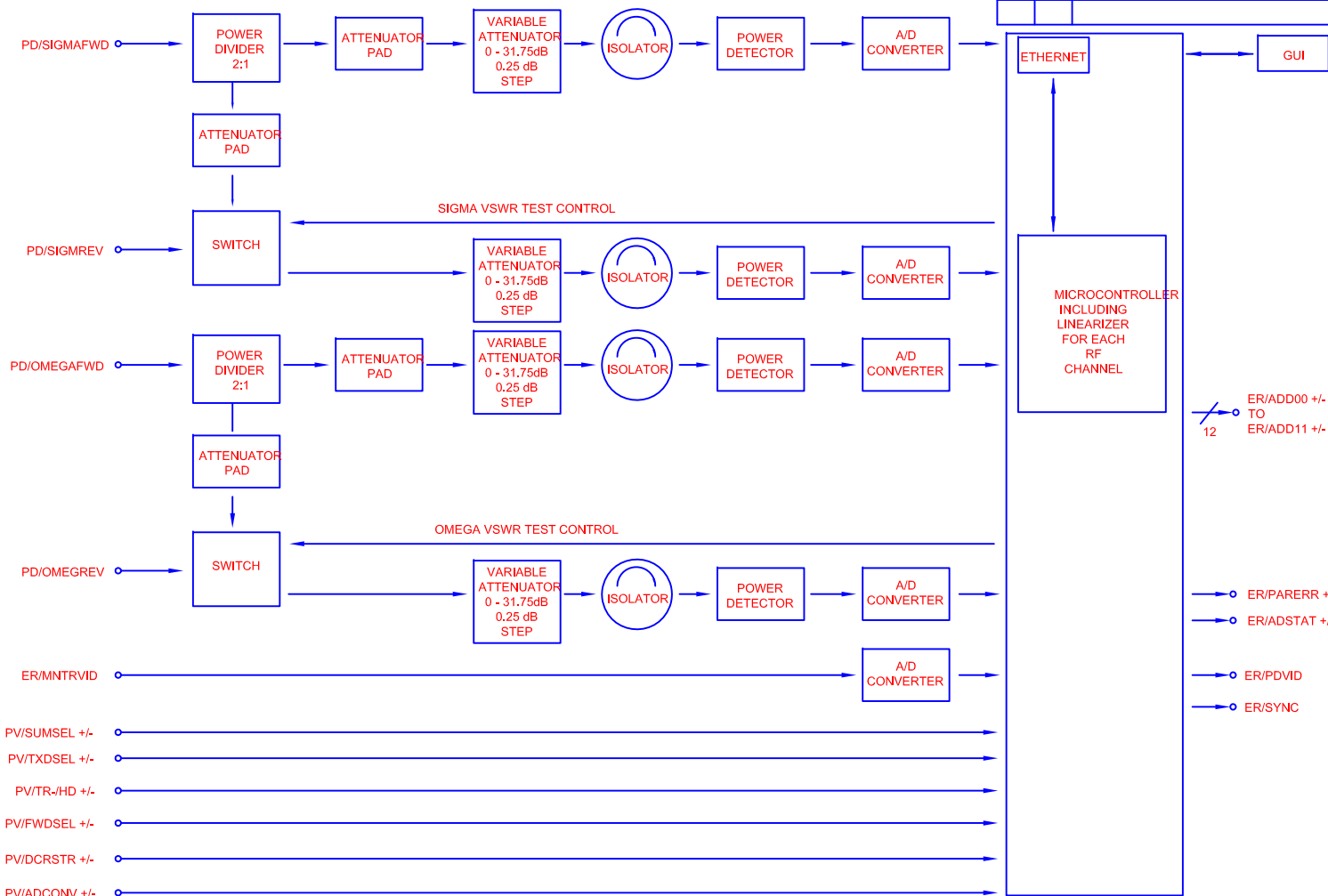
7311-F GROVE ROAD
 FREDERICK, MARYLAND 21704 USA
 TEL: 301-662-5019 FAX: 301-662-1731
 WEBSITE: www.pmi-rf.com
 E-MAIL: sales@pmi-rf.com
 ISO 9001 CERTIFIED



APPROVALS		DATE	TITLE		
DRAWN		2/13/15	PRODUCT FEATURE		
CHECKED			PMOD-PWR-1030M-ATN-SFF		
ISSUED			POWER DETECTOR MODULE		
SIZE	FSCM NO.	DWG NO.	REV.		
A	05XQ0	27024101	A1		
SCALE N:S			SHEET 6 OF 7		

BLOCK DIAGRAM:

REVISIONS				
ZONE	REV.	DESCRIPTION	DATE	APPROVED
	A1	ORIGINAL RELEASE	2/13/15	



PLANAR MONOLITHICS INDUSTRIES, INC.

7311-F GROVE ROAD
 FREDERICK, MARYLAND 21704 USA
 TEL: 301-662-5019 FAX: 301-662-1731
 WEBSITE: www.pmi-rf.com
 E-MAIL: sales@pmi-rf.com
 ISO 9001 CERTIFIED



PMI CONFIDENTIAL AND PROPRIETARY

APPROVALS		DATE	TITLE		
DRAWN <i>DPD</i>		2/13/15	PRODUCT FEATURE		
CHECKED			PMD- PWR- 1030M- ATN- SFF		
ISSUED			POWER DETECTOR MODULE		
SIZE	FSCM NO.	DWG NO.	REV.		
A	05XQ0	27024101	A1		
SCALE N:S			SHEET 7 OF 7		